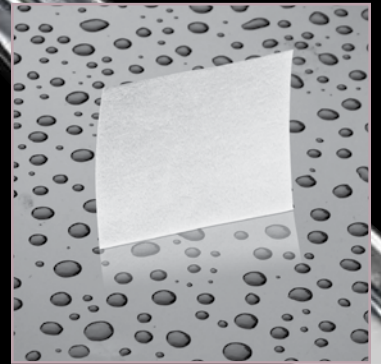
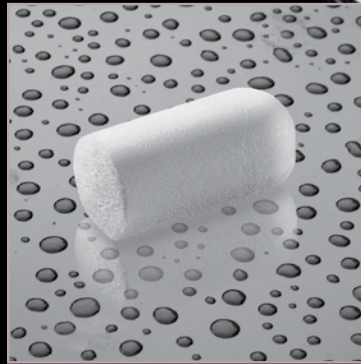


*Miltex*<sup>®</sup>  
Redefining Excellence



MILTEX<sup>®</sup> COLLAGEN PRODUCTS

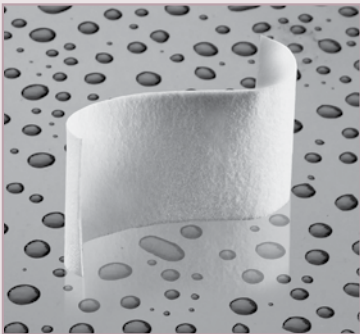
## HeliTAPE<sup>®</sup>, HeliCOTE<sup>®</sup> & HeliPLUG<sup>®</sup>



Miltex<sup>®</sup> collagen wound dressing products are used to help control bleeding, develop blood clots and to protect the wound site in order for the healing process to begin. The Miltex<sup>®</sup> product offering includes HeliCOTE<sup>®</sup>, HeliPLUG<sup>®</sup> and HeliTAPE<sup>®</sup> collagen wound dressing products. Heli products are reabsorbed by the body within 10 to 14 days after placement.

These collagen products are packaged in individual clam shells with an easy to peel backing, reducing tray set up time and making it easy for clinicians to open packages during procedures. The product is sterile and is sold in packs of 10.

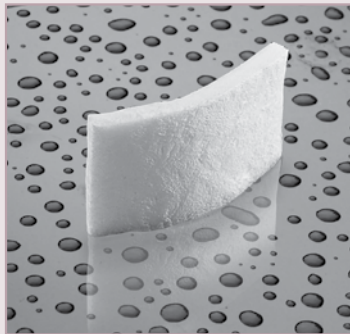
REF	Description	Qty/Box
62-200	HeliTAPE <sup>®</sup> Collagen Wound Dressing, 1" x 3" (2.5cm x 7.5cm)	10
62-201	HeliCOTE <sup>®</sup> Collagen Wound Dressing, 3/4" x 1.5" (1.9cm x 3.8cm)	10
62-202	HeliPLUG <sup>®</sup> Collagen Wound Dressing, 3/8" x 3/4" (1cm x 2cm)	10



### HeliTAPE<sup>®</sup>

#### Indications

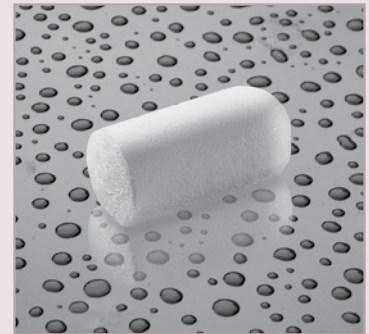
- For dressing minor wounds
- Aids in the closure of graft sites
- Used to help repair the Schniderian Membrane



### HeliCOTE<sup>®</sup>

#### Indications

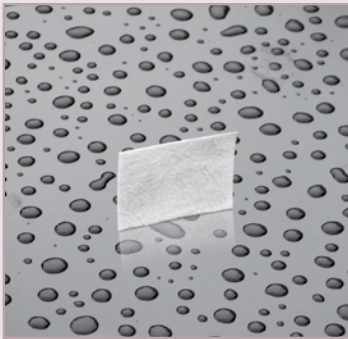
- Used in palatal donor sites
- Used in mucosal flaps



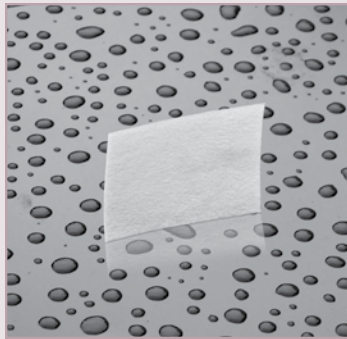
### HeliPLUG<sup>®</sup>

#### Indications

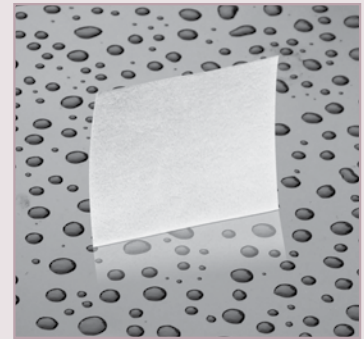
- To control bleeding and to develop blood clots in extraction sites
- To control bleeding and to develop blood clots in biopsy sites



15 mm x 20 mm



20 mm x 30 mm



30 mm x 40 mm

## HeliMEND™ & HeliMEND™ Advanced Features & Benefits

### Features

- Longer absorption rate
- Wound stabilization
- Excellent handling characteristics
- Available in 3 sizes

### Benefits

- Allows for healing to occur at the defect site
- Helps control bleeding and develop blood clots
- Material is pliable and does not become slippery when hydrated
- Provides clinicians with the appropriate size material for the defect

The HeliMend™ and HeliMend™ Advanced absorbable collagen membranes are made from purified bovine tendon. The product provides wound stabilization and creates space during guided tissue regeneration procedures where a longer absorption rate is desired. The HeliMend™ collagen membrane is absorbed in 4 to 8 weeks; while the HeliMend™ Advanced collagen membrane is absorbed in 18 weeks.

The product is easy to use and has excellent handling characteristics. The membrane is very pliable and does not become slippery when hydrated, making it easier for clinicians to properly place the membrane over the defect. Each membrane is supplied sterile and in an easy to open package.



REF	Description	Qty/Box
62-203	HeliMend™ Absorbable Collagen Membrane, 15 mm x 20 mm	1
62-204	HeliMend™ Absorbable Collagen Membrane, 20 mm x 30 mm	1
62-205	HeliMend™ Absorbable Collagen Membrane, 30 mm x 40 mm	1
62-206	HeliMend™ Advanced Absorbable Collagen Membrane, 15 mm x 20 mm	1
62-207	HeliMend™ Advanced Absorbable Collagen Membrane, 20 mm x 30 mm	1
62-208	HeliMend™ Advanced Absorbable Collagen Membrane, 30 mm x 40 mm	1



[www.miltex.com](http://www.miltex.com)  
toll-free phone 866-854-8300  
toll-free fax 866-854-8400  
phone 717-840-9335  
fax 717-840-9347

Please call Customer Service today for additional information, an in-office demonstration, to place an order, or to receive other Miltex catalogs.

Miltex and Miltex Redefining Excellence are registered trademarks of Miltex, Inc., a subsidiary of Integra LifeSciences Corporation.  
The Integra wave logo and HeliMend are trademarks and HeliCote, HeliPlug and HeliTape are registered trademarks of Integra LifeSciences Corporation.  
Copyright© 2010 Integra LifeSciences Corporation

